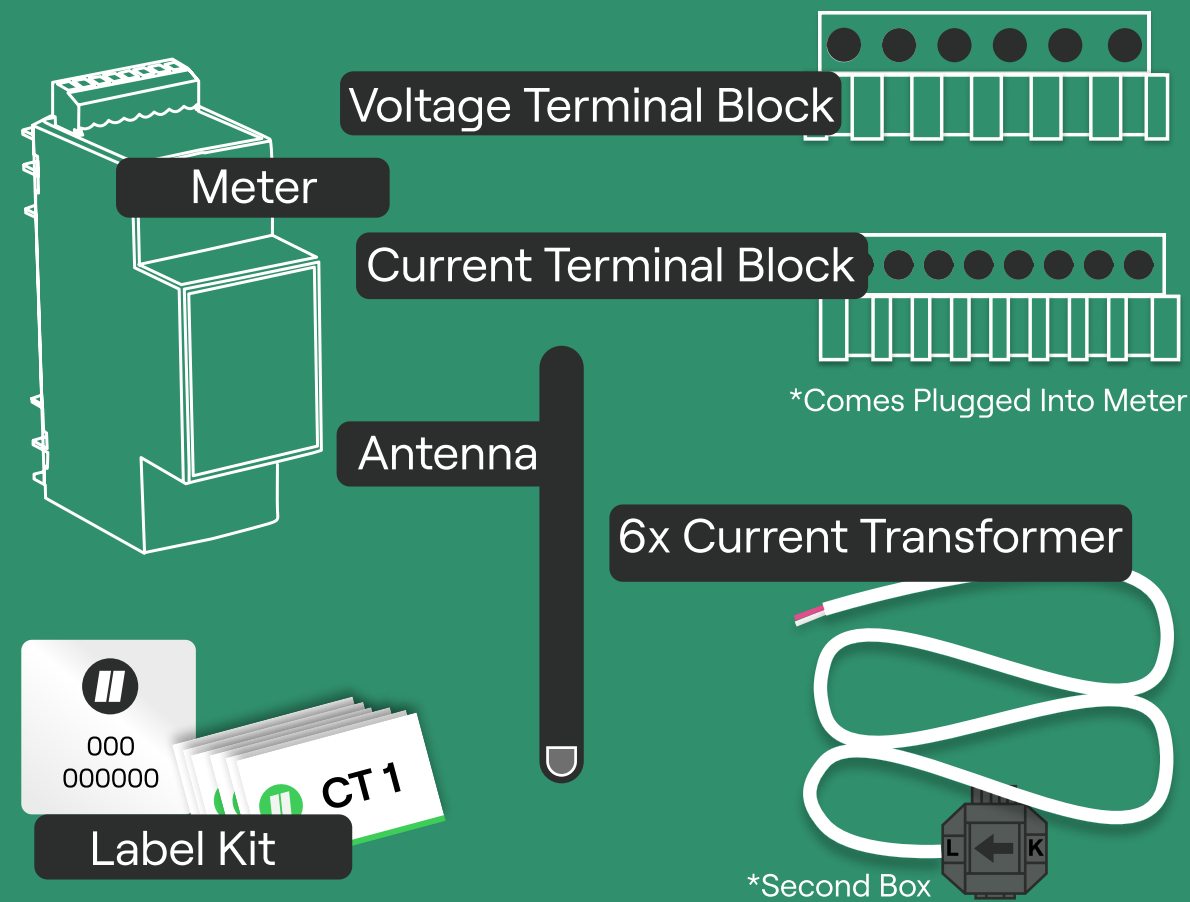




Quick Install Guide

Before You Begin

a. Check Boxes For Correct Equipment



b. The Meter Will Need To Be Powered By A Maximum 10A Breaker

Single phase for single phase homes
Three phase for three phase homes

c. Plan What Circuits To Measure

Each Meter can measure up to 6 circuits.

The following circuits **MUST** be monitored if they are on the site:

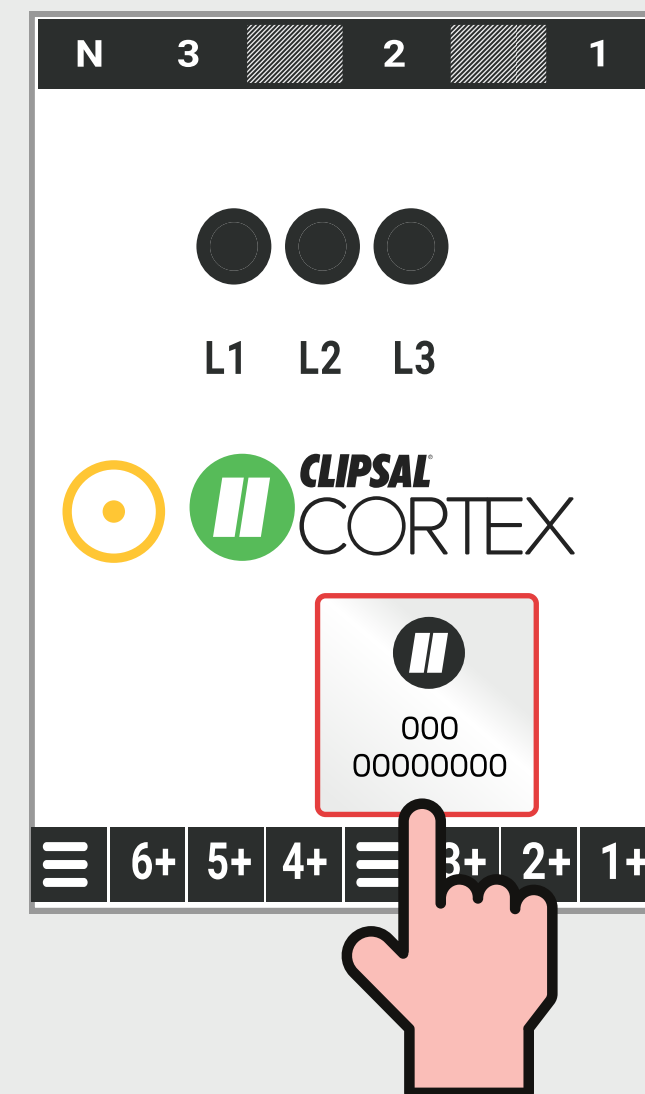
- Each Phase of Grid
- Off Peak Controlled Loads e.g. Hot Water
- All Solar Circuits
- Batteries

d. Get Your Company A Clipsal Cortex Fleet Account

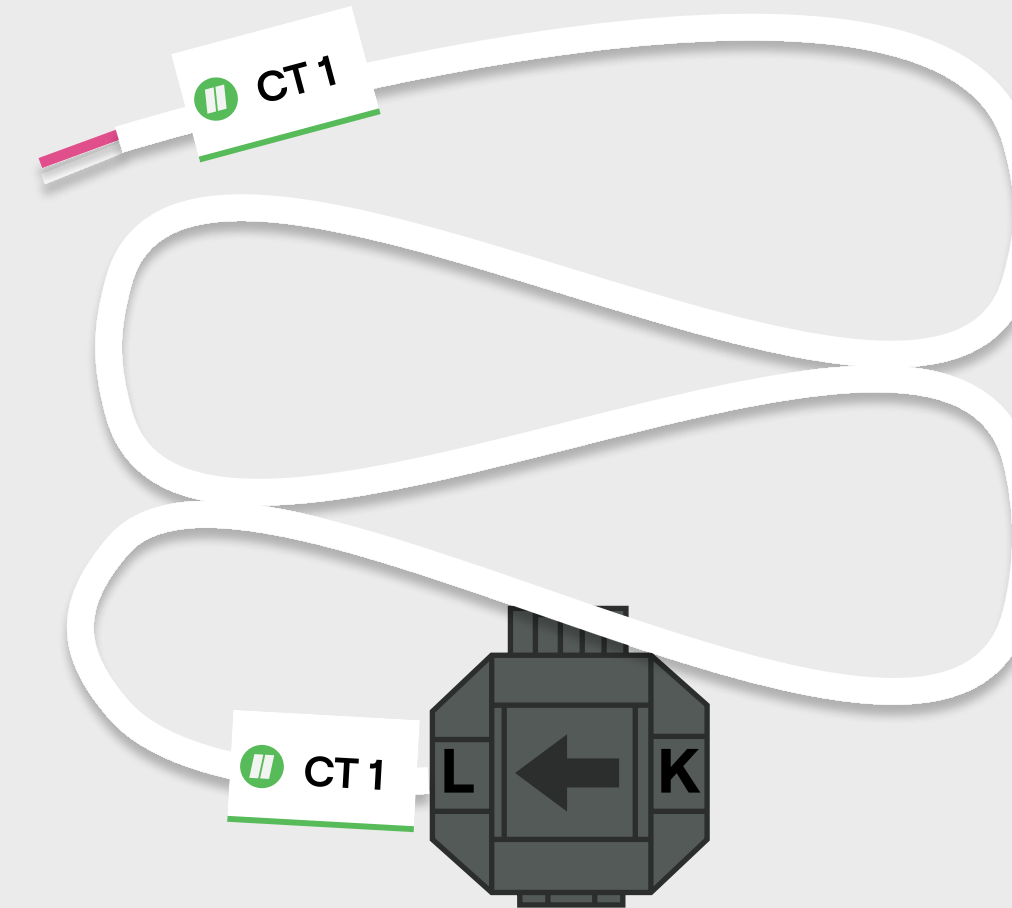


The Meter Must Be Installed By A Licensed Electrician.
Please Be Sure To Adhere To All Local Standards And Regulations.

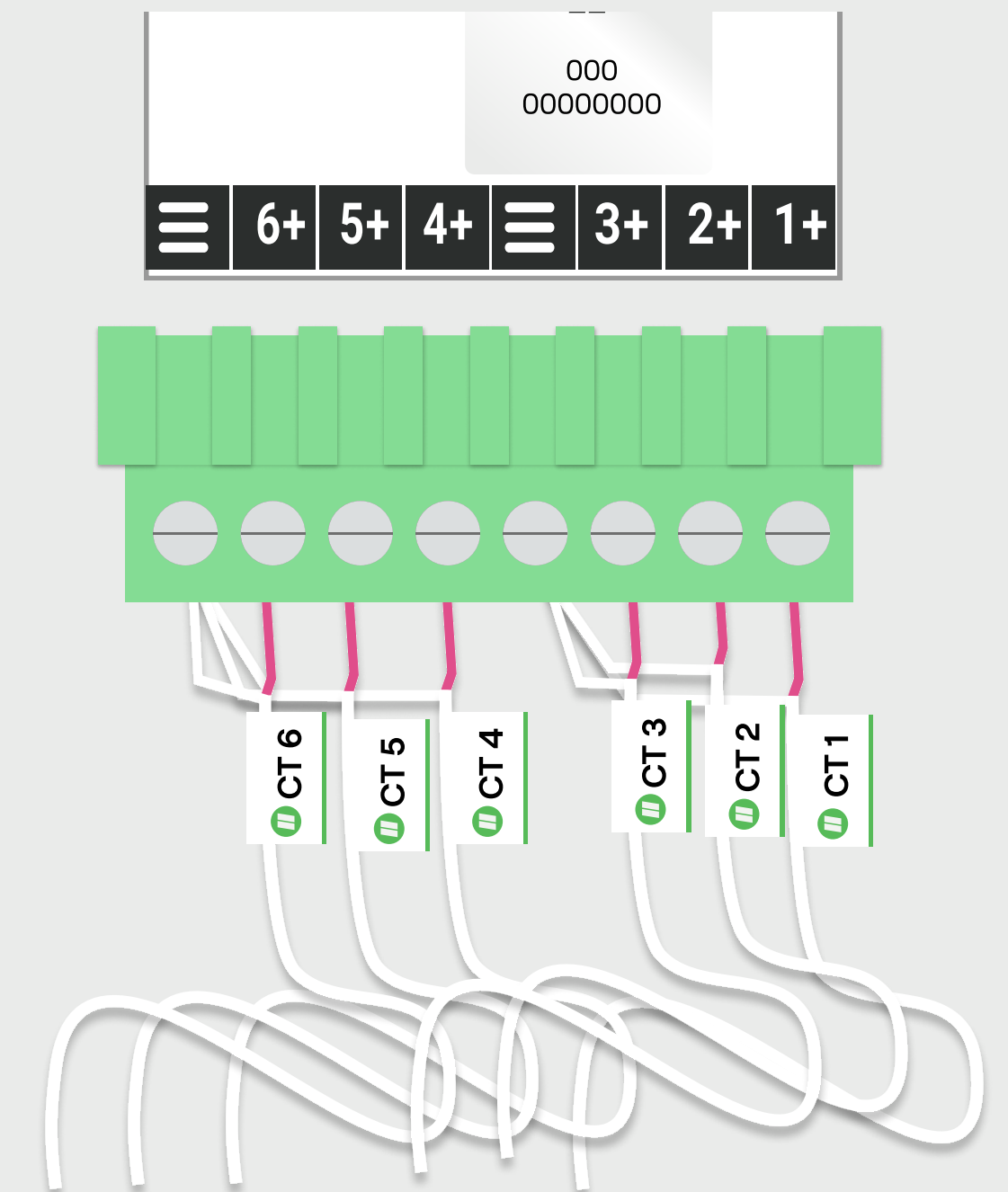
1. Apply Serial Label On Front Face



2. Apply Labels Numbered 1-6 On The Top And Bottom Of CTs

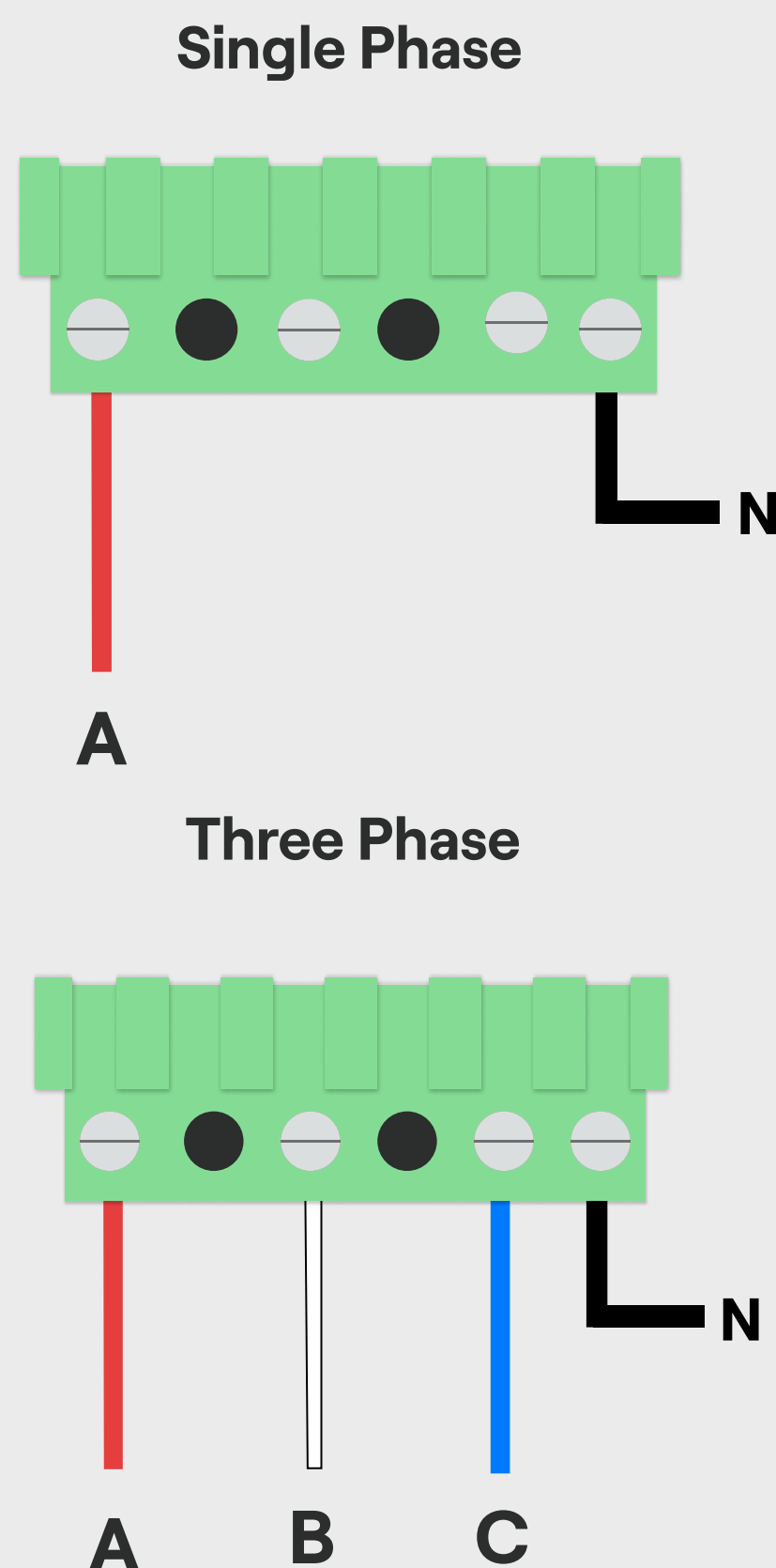


3. Wire CTs To The Terminal Block

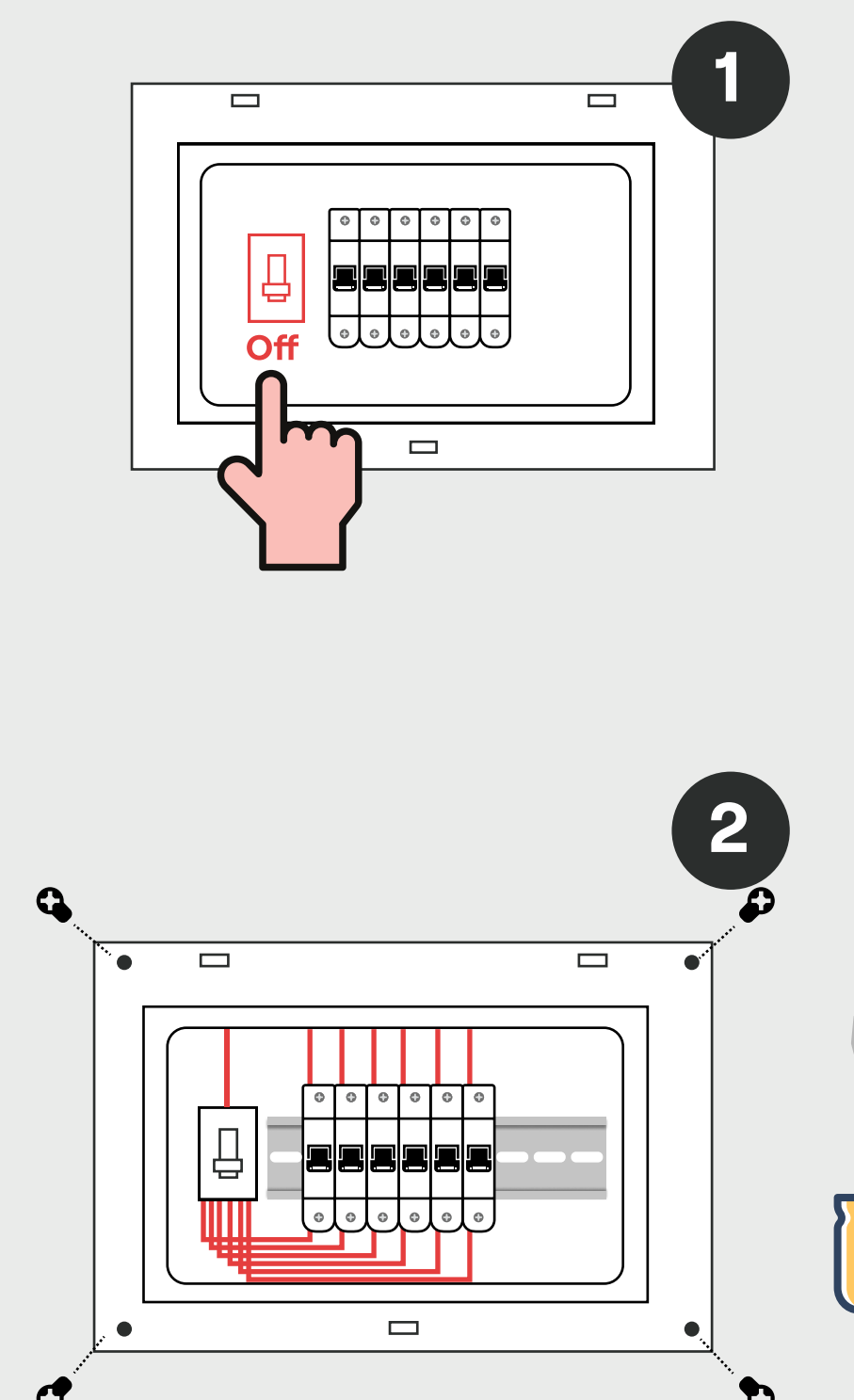


When The CT Terminal Block is plugged into the meter the CTs should be numbered 1-6 from **RIGHT TO LEFT**

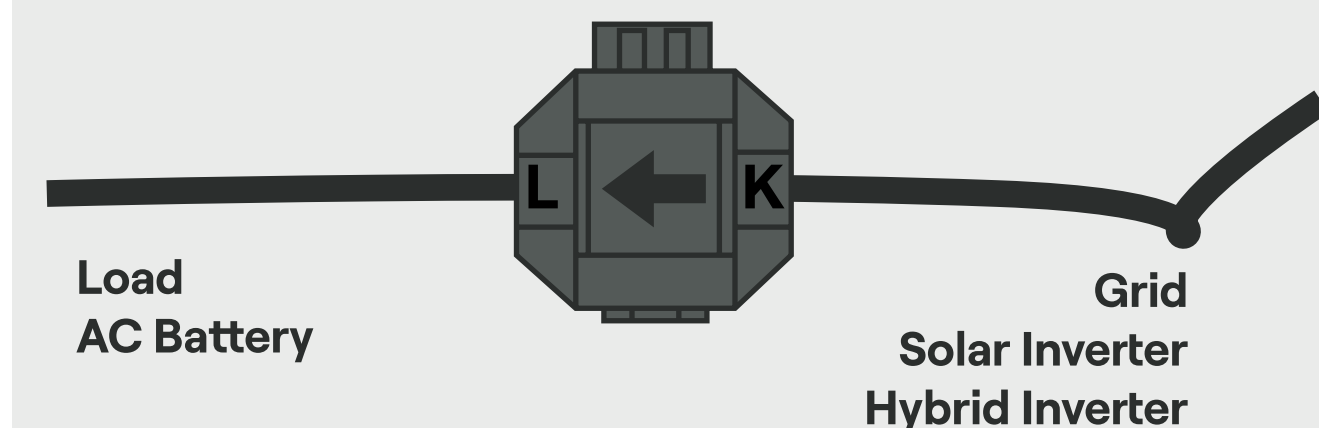
4. Wire Voltage Terminal Block



5. Turn Off Power And Remove Escutcheon



6. Clamp CTs On All 6 Circuits Being Measured



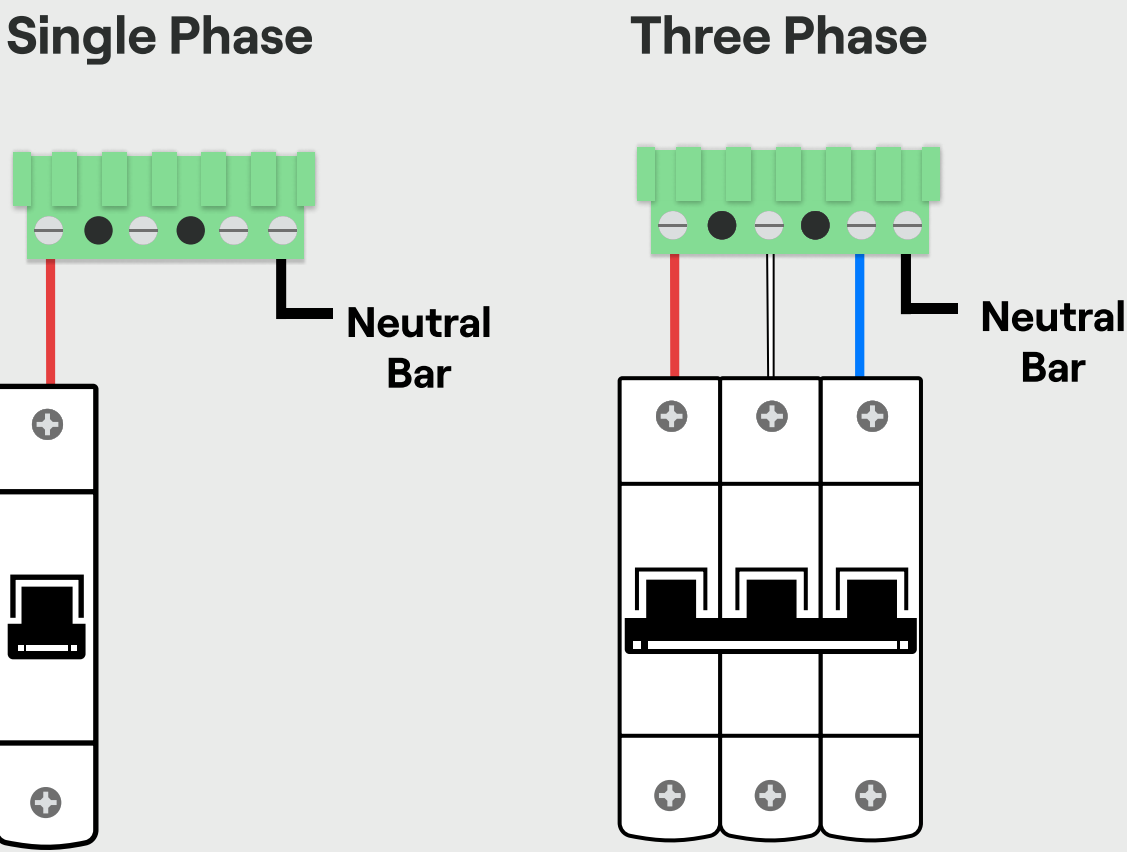
If the **CT** is measuring a Load or AC Battery the arrow should point **TOWARDS THEM**.

If the **CT** is measuring the Grid, Solar or Hybrid Inverter the arrow should point **AWAY FROM THAT POWER SOURCE**.

On 3 phase sites note which phase each circuit is on. This will be required later when commissioning.

Coloured stickers can be used for this.

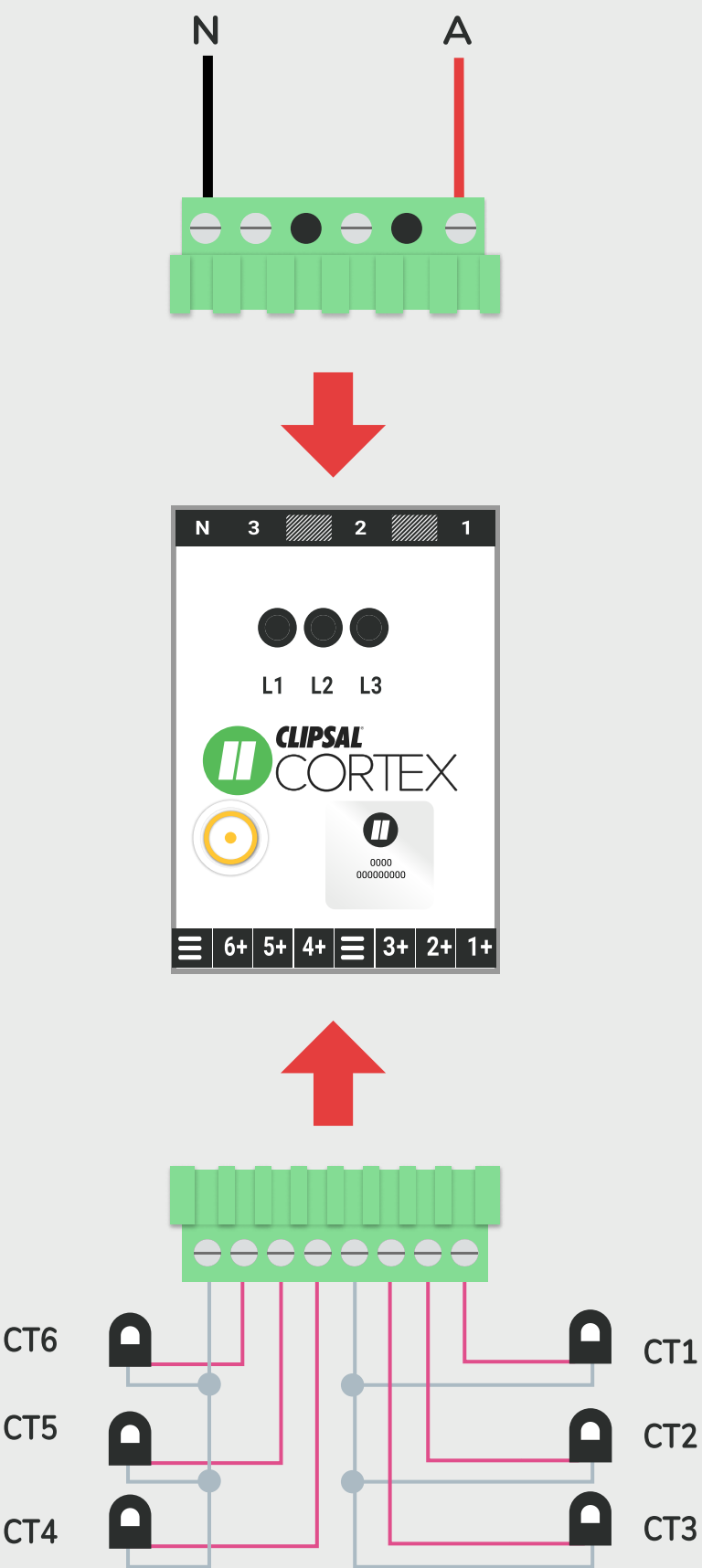
7. Wire Voltage Tails To Breaker



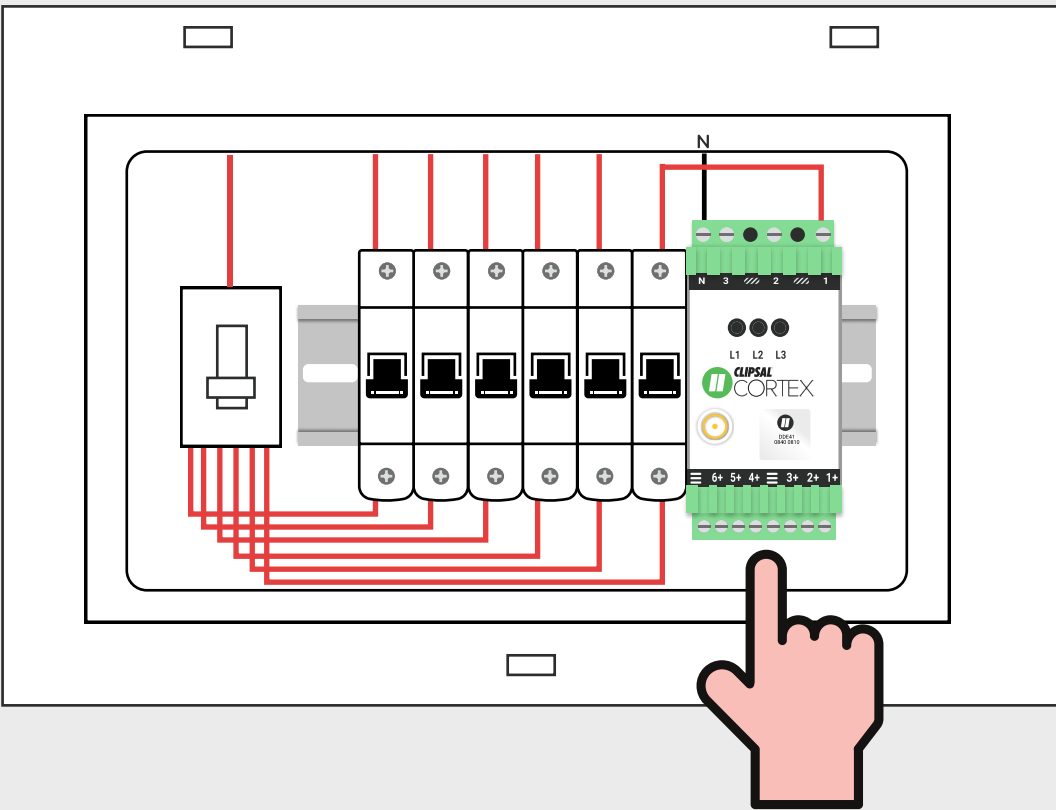
For 2 phase sites or sites with battery backup view wiring diagrams by scanning QR code:



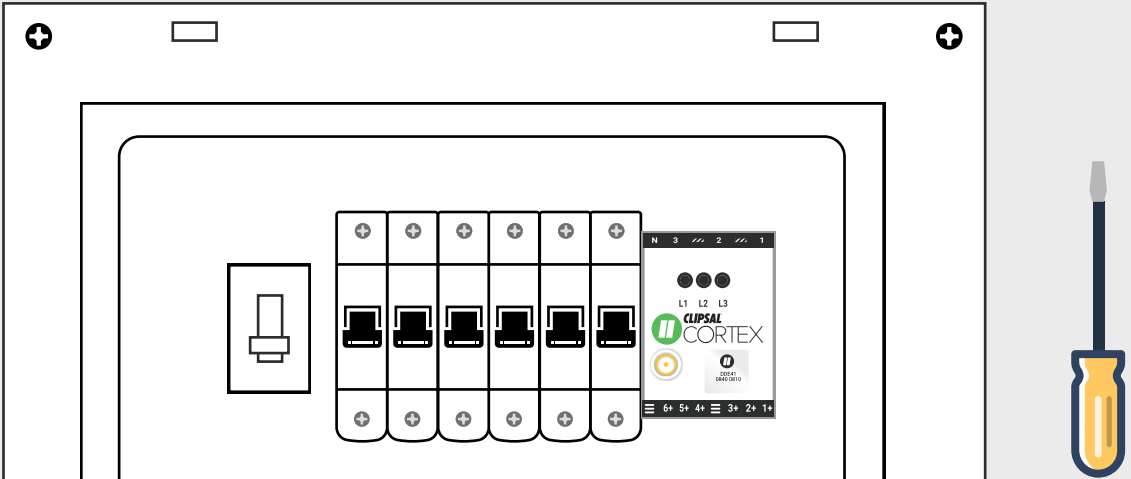
8. Plug Voltage And Current Terminal Blocks Into Meter



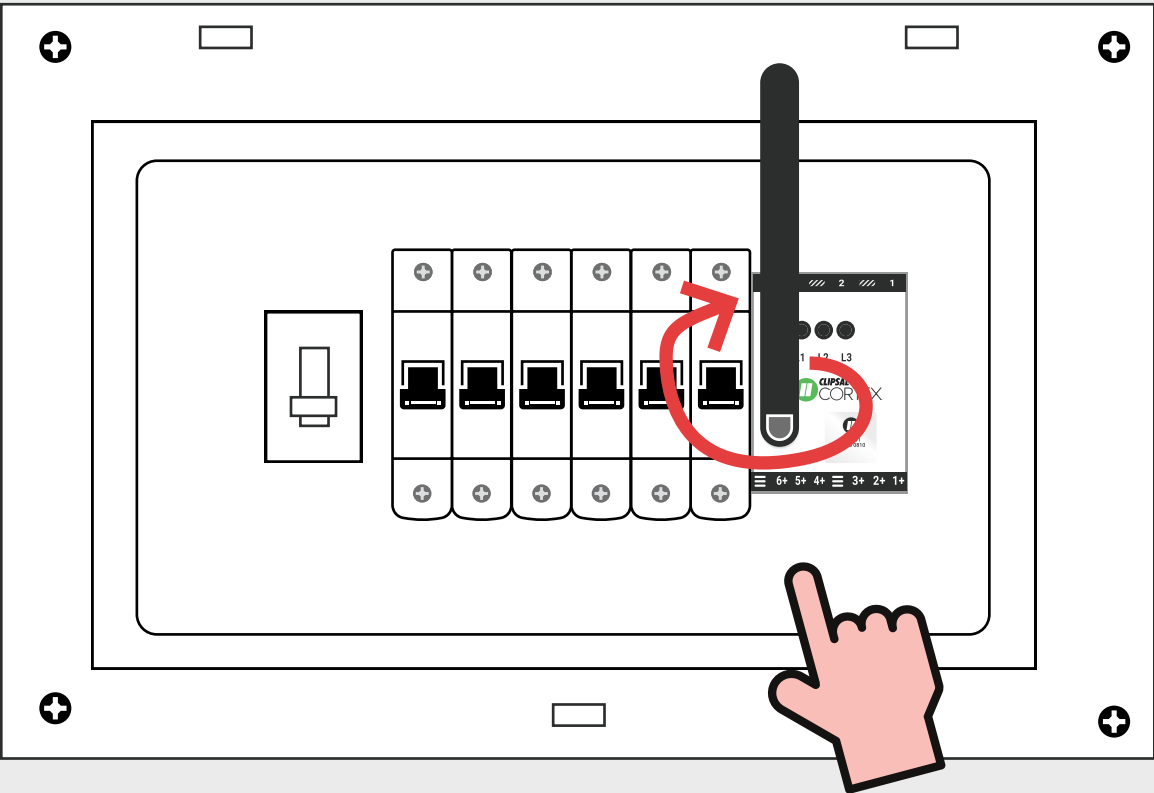
9.Clamp Meter Onto DIN



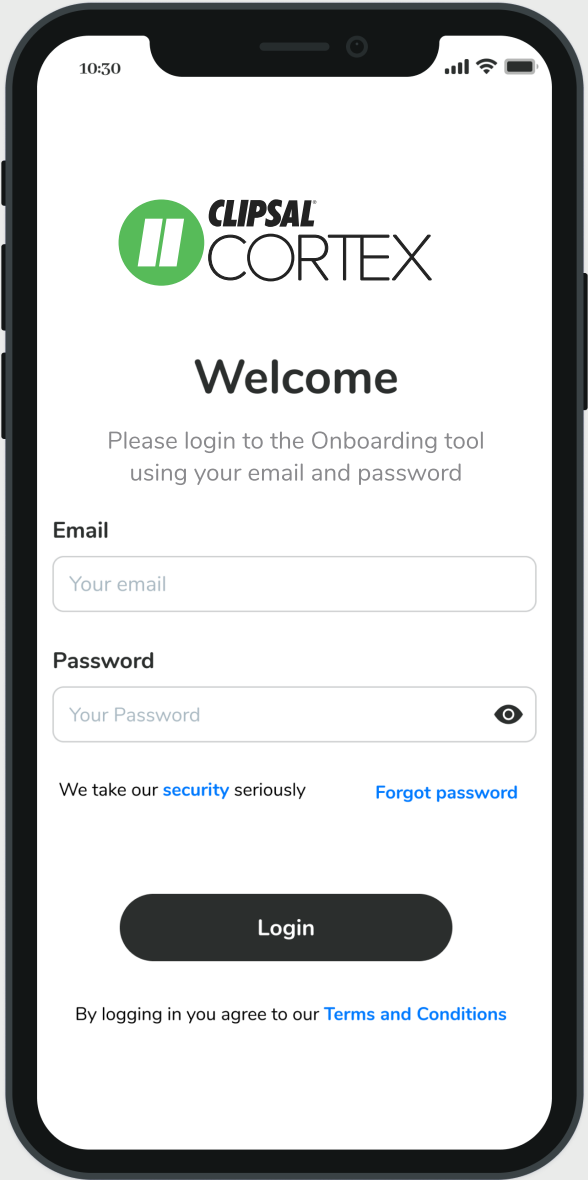
10. Replace Switchboard Escutcheon



11.Screw On The Antenna



12.Switch On Power And Commission Using The Clipsal Cortex Fleet App



Clipsal Cortex
Fleet App

Lights And Support

When meter is communicating all 3 green lights are solid.

L1	L2	L3	Explanation
			Connection Complete
			Powered Off (Check P1 is receiving voltage)
			Powering On
			Powered On
			Searching for Network
			Network Found
			Waiting for servers (May require external antenna)

Support

Clipsalcortex.com
(02) 8310 9220
(answered 9am-5pm Mon-Fri AEDT)



Installer Hub

To view installation hints, videos and troubleshooting guides see our website:
clipsalcortex.com



Website